

Temperature	January	February	March	April	May	June	July	August	September	October	November	December
2009	20.1	20.8	18.6	16.4	12.1	12.1	11.2	12.5	11.9	13	14.7	16.9
2010	18.4	19.8	17.4	14.9	12.50	9.9	8.2	11.1	12.5	12.8	15.7	19
2011	19.8	20	17.7	14.6	13.80	11.8	9.6	8.6	9.7	13.2	14.1	16.5
2012	16.5	17.3	15.7	14.1	10.60	8.9	9.2	10.1	11.1	12	13	19.5
2013	17.7	17.5	17.2	16	11.60	9.9	9	10.9	11.4	12.7	15.2	
2014	16.5	18.3	15.7	15.4	11.20	11						
<b>AVERAGE</b>	<b>18.2</b>	<b>19.0</b>	<b>17.1</b>	<b>15.2</b>	<b>12.0</b>	<b>10.6</b>	<b>9.4</b>	<b>10.6</b>	<b>11.3</b>	<b>12.7</b>	<b>14.5</b>	<b>18.0</b>

Rain Fall	January	February	March	April	May	June	July	August	September	October	November	December
2009	38.8	143.6	41.1	54.1	39.5	121.8	138.8	115.4	119.4	148.5	55.6	88
2010	74.9	39.5	18.6	44.3	159.70	217.1	92.8	265.5	169.2	47.5	47.6	96.6
2011	253.8	20.4	167.3	111.1	143.30	134.3	125.2	73.4	86.2	105.4	40.2	164.7
2012	77.2	87.4	140	61.2	124.50	125.3	216.3	131.5	122.7	117.6	68.1	96.4
2013	14.7	23.9	31.6	139.7	189.40	152.5	58.5	153.1	156.8	69.3	73.6	
2014	68.5	12.3	70.3	164.6	87.60	198.8						
<b>AVERAGE</b>	<b>88.0</b>	<b>54.5</b>	<b>78.2</b>	<b>95.8</b>	<b>124.0</b>	<b>158.3</b>	<b>126.3</b>	<b>147.8</b>	<b>130.9</b>	<b>97.7</b>	<b>57.0</b>	<b>111.4</b>

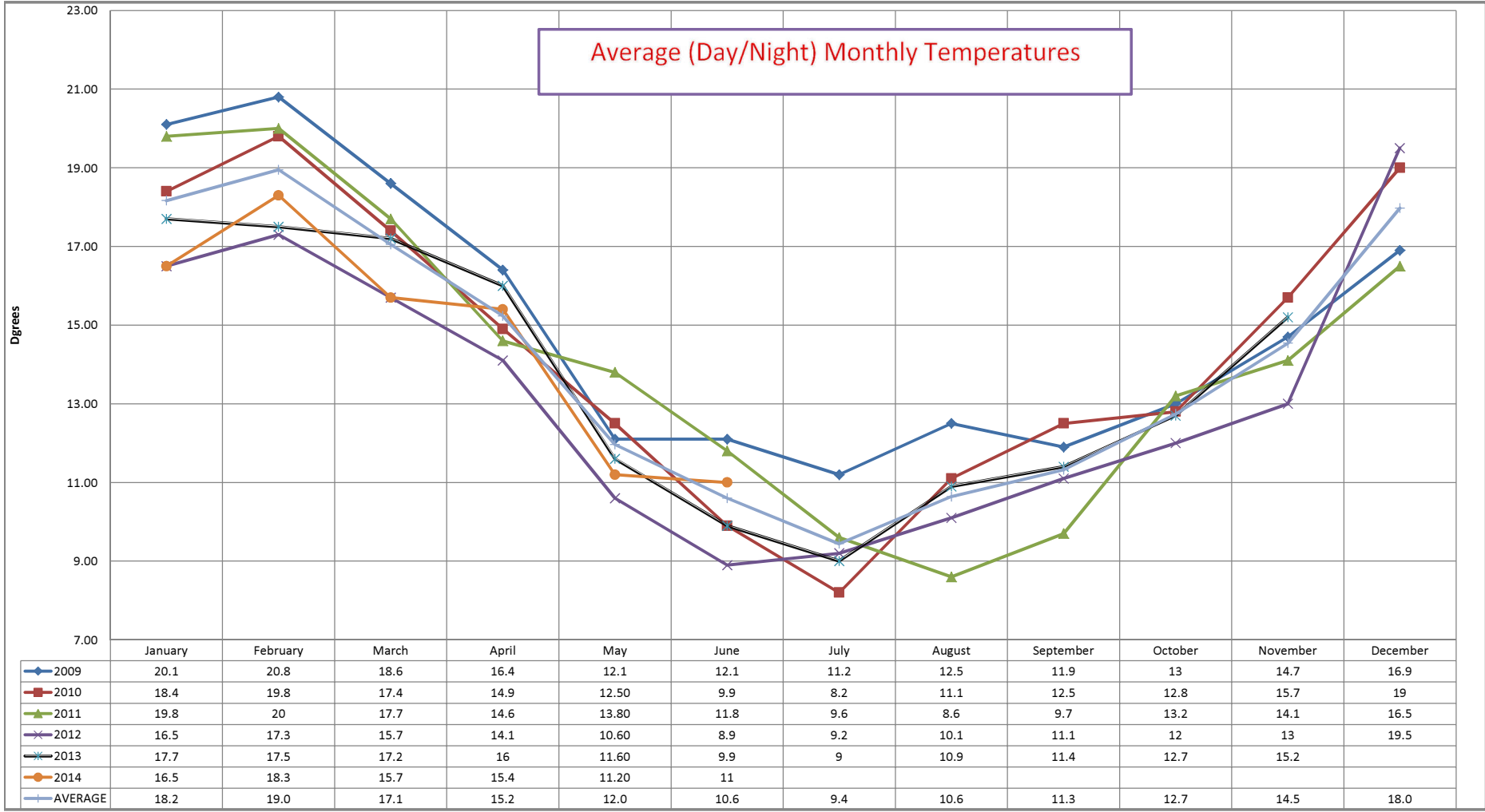
Sun Hours	January	February	March	April	May	June	July	August	September	October	November	December
2009	180.2	60.5	102.2	64.2	76.2	84.1	98.7	140	152.9	142.4	109.1	129.4
2010	79	39.7	50.7	24.5	47.60	84.5	125.4	112.3	150.8	249.5	235.4	149.5
2011	168.3	86.6	69.7	28.3	18.30	26.5	108.1	102	86.6	79.1	90.4	55.4
2012	98.3	113	119.7	116.2	114.80	83.8	103	120	245.4	142.8	136.7	118.7
2013	200.3	161.8	160.3	104.9	95.80	67.1	80.7	84.3	91.4	135.1	152.4	
2014	197.4	130.4	161	117.6	102.20	64.4						
<b>AVERAGE</b>	<b>153.9</b>	<b>98.7</b>	<b>110.6</b>	<b>76.0</b>	<b>75.8</b>	<b>68.4</b>	<b>103.2</b>	<b>111.7</b>	<b>145.4</b>	<b>149.8</b>	<b>144.8</b>	<b>113.3</b>

GDD	January	February	March	April	May	June	July	August	September	October	November	December
2010								<b>707.8</b>	706	761.2	804.2	907.2
2011	934.6	852.3	856.2	745.8	773.70	694.3	685.5	684.1	676.5	703.5	688.8	784.1
2012	776.6	799.1	785.8	761.8	717.60	660	686.7	676	704.3	724.3	725.9	327.2
2013	870.2	782.9	803.9	446.1	706.90	663.2	675.6	675.6	695.2	646.2	635.9	
2014	831.6	775	832.2	791.8	731.00	688.7						
<b>AVERAGE</b>	<b>853.3</b>	<b>802.3</b>	<b>819.5</b>	<b>686.4</b>	<b>732.3</b>	<b>676.6</b>	<b>682.6</b>	<b>685.9</b>	<b>695.5</b>	<b>708.8</b>	<b>713.7</b>	<b>672.8</b>

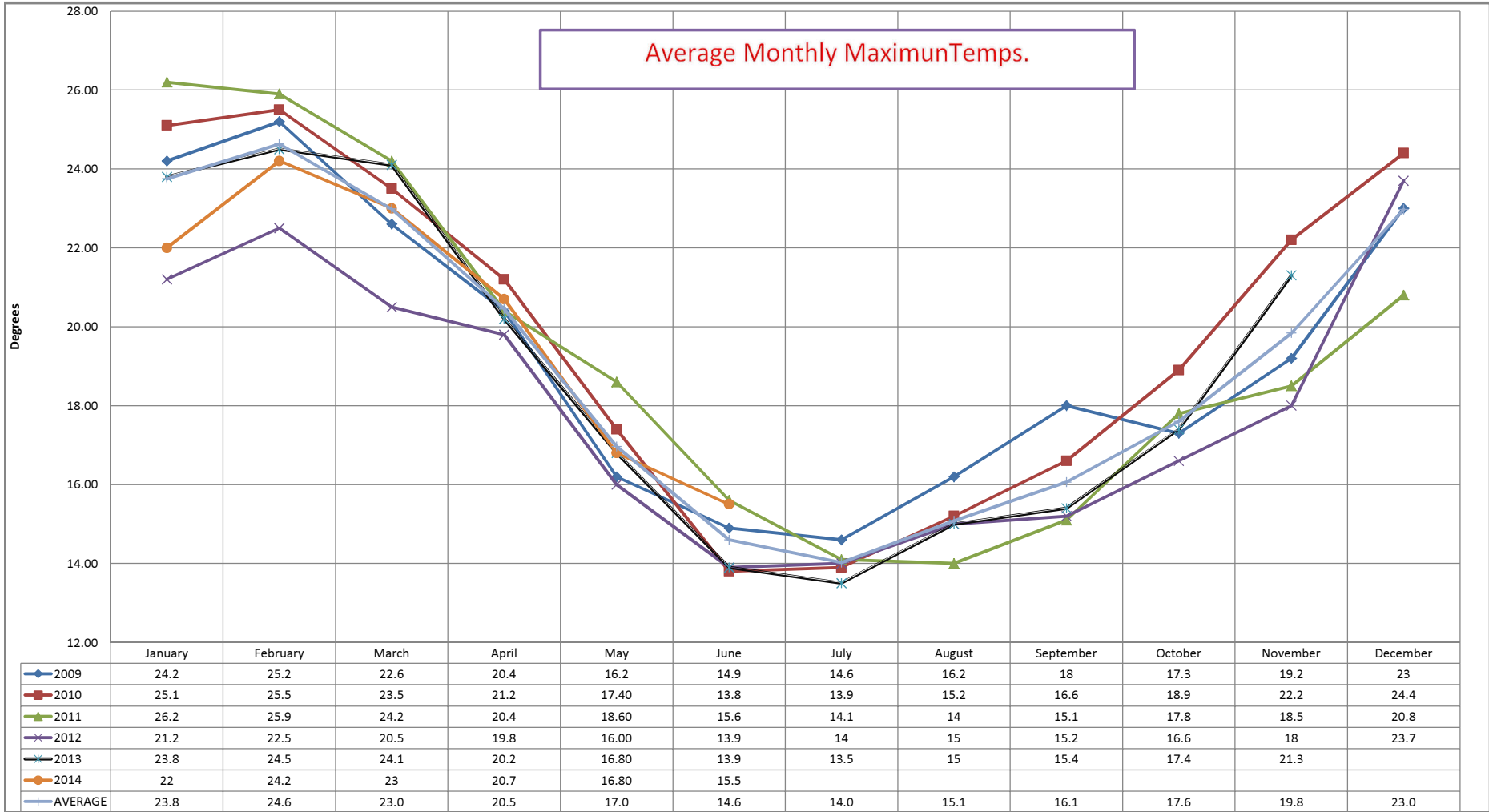
Avg Day Max Te	January	February	March	April	May	June	July	August	September	October	November	December
2009	24.2	25.2	22.6	20.4	16.2	14.9	14.6	16.2	18	17.3	19.2	23
2010	25.1	25.5	23.5	21.2	17.40	13.8	13.9	15.2	16.6	18.9	22.2	24.4
2011	26.2	25.9	24.2	20.4	18.60	15.6	14.1	14	15.1	17.8	18.5	20.8
2012	21.2	22.5	20.5	19.8	16.00	13.9	14	15	15.2	16.6	18	23.7
2013	23.8	24.5	24.1	20.2	16.80	13.9	13.5	15	15.4	17.4	21.3	
2014	22	24.2	23	20.7	16.80	15.5						
<b>AVERAGE</b>	<b>23.8</b>	<b>24.6</b>	<b>23.0</b>	<b>20.5</b>	<b>17.0</b>	<b>14.6</b>	<b>14.0</b>	<b>15.1</b>	<b>16.1</b>	<b>17.6</b>	<b>19.8</b>	<b>23.0</b>

Avg Day Min Te	January	February	March	April	May	June	July	August	September	October	November	December
2009	16.7	17.6	15.1	13.6	9.4	10.4	8.3	9	6.8	6.6	10.1	10.9
2010	12	14.5	12.1	9.4	8.10	6.1	3.7	7.1	8.4	7	9.5	14.7
2011	17.2	18.6	12.1	9.5	9.40	8.2	7.4	3.5	4.4	8.5	9.6	12.7
2012	11.9	12.4	10.9	8.8	5.50	3.8	5.1	5.7	7.1	7.1	8	15.8
2013	11.8	11.1	11	11.9	7.20	5.8	4.4	6.7	7.7	7.9	9.8	
2014	10.8	12.8	9.5	10.8	6.00	6.8						
<b>AVERAGE</b>	<b>13.4</b>	<b>14.5</b>	<b>11.8</b>	<b>10.7</b>	<b>7.6</b>	<b>6.9</b>	<b>5.8</b>	<b>6.4</b>	<b>6.9</b>	<b>7.4</b>	<b>9.4</b>	<b>13.5</b>

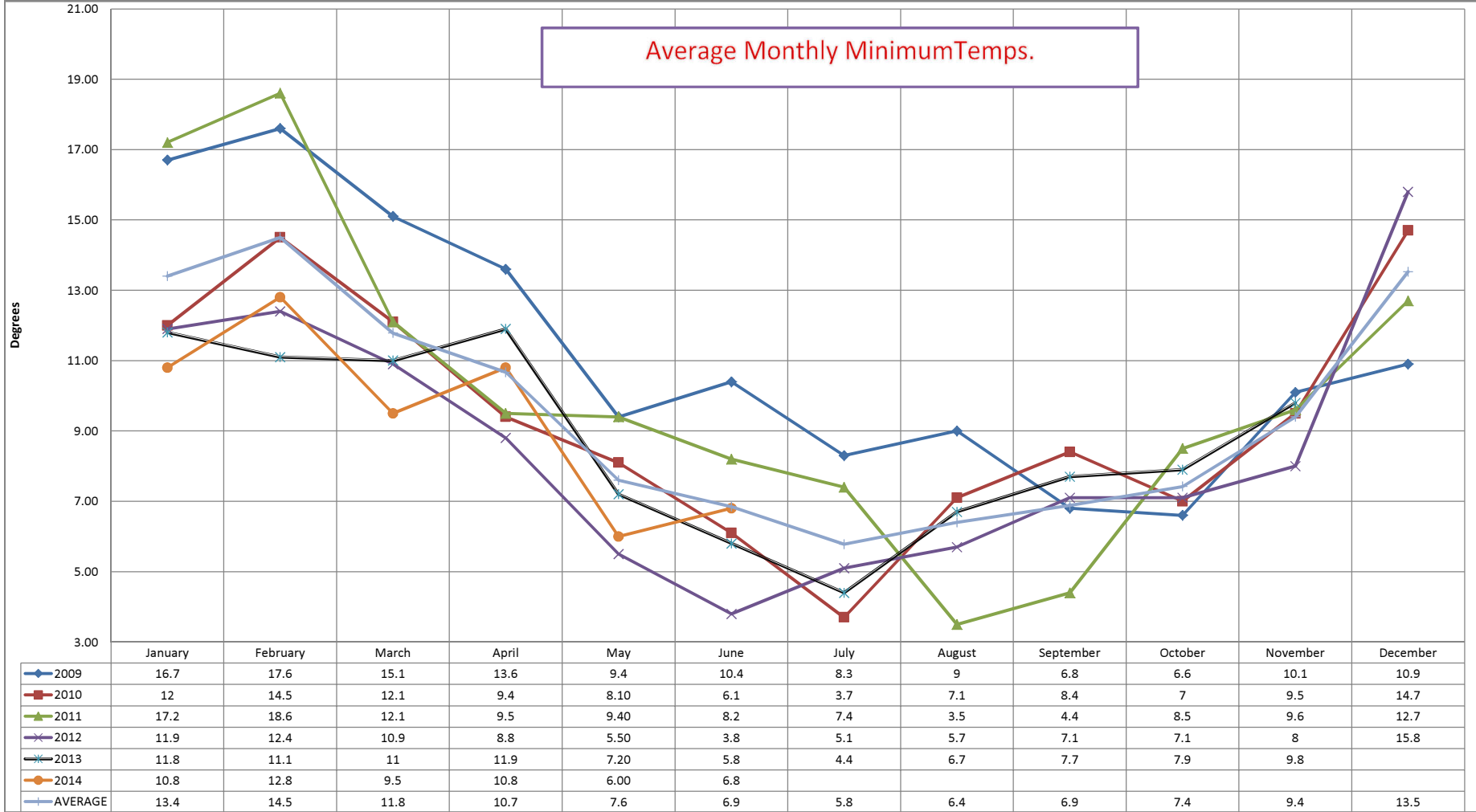
Average (Day/Night) Monthly Temperatures



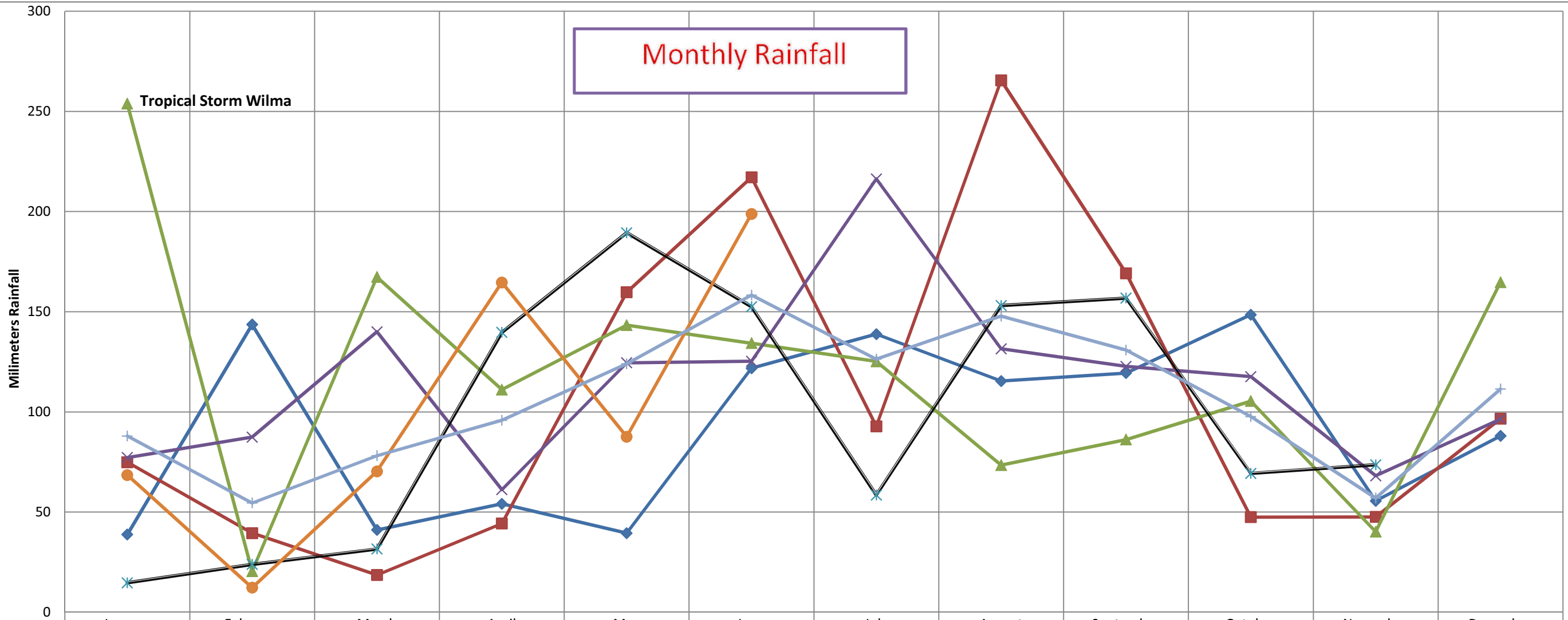
Average Monthly MaximunTemps.



Average Monthly Minimum Temps.



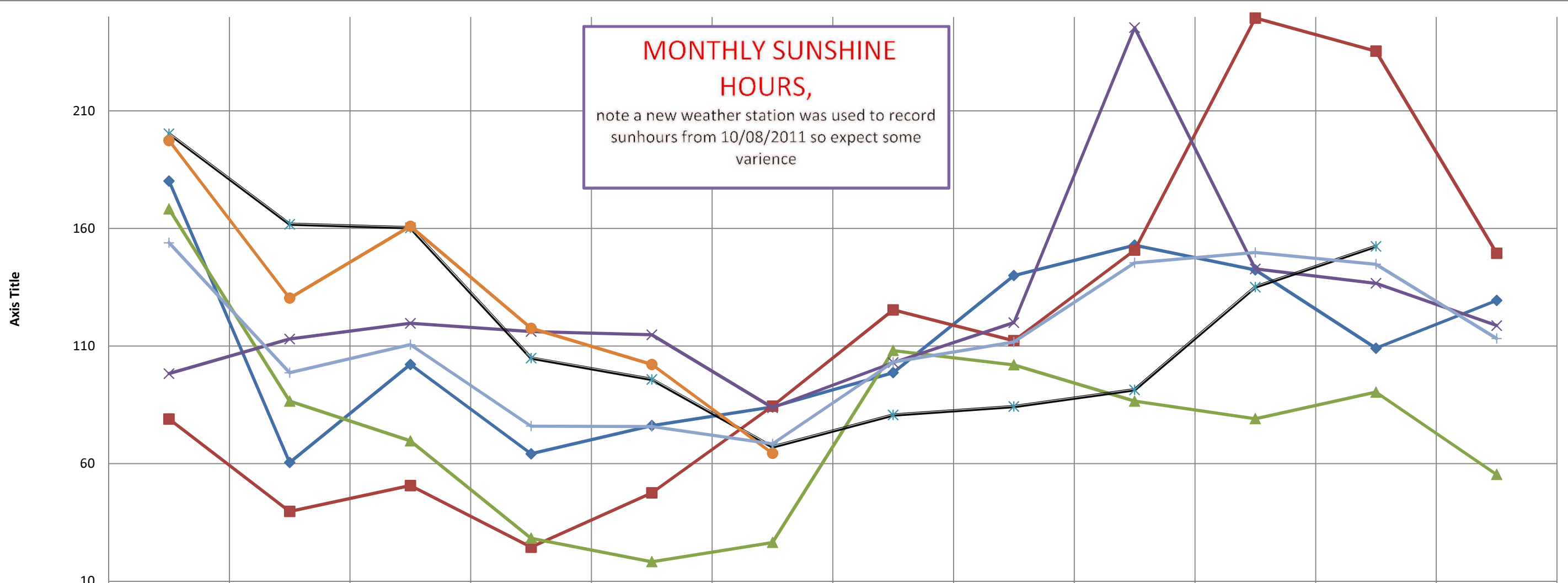
# Monthly Rainfall



	January	February	March	April	May	June	July	August	September	October	November	December
2009	38.8	143.6	41.1	54.1	39.5	121.8	138.8	115.4	119.4	148.5	55.6	88
2010	74.9	39.5	18.6	44.3	159.70	217.1	92.8	265.5	169.2	47.5	47.6	96.6
2011	253.8	20.4	167.3	111.1	143.30	134.3	125.2	73.4	86.2	105.4	40.2	164.7
2012	77.2	87.4	140	61.2	124.50	125.3	216.3	131.5	122.7	117.6	68.1	96.4
2013	14.7	23.9	31.6	139.7	189.40	152.5	58.5	153.1	156.8	69.3	73.6	
2014	68.5	12.3	70.3	164.6	87.60	198.8						
AVERAGE	88.0	54.5	78.2	95.8	124.0	158.3	126.3	147.8	130.9	97.7	57.0	111.4

## MONTHLY SUNSHINE HOURS,

note a new weather station was used to record sunhours from 10/08/2011 so expect some variance



	January	February	March	April	May	June	July	August	September	October	November	December
2009	180.2	60.5	102.2	64.2	76.2	84.1	98.7	140	152.9	142.4	109.1	129.4
2010	79	39.7	50.7	24.5	47.60	84.5	125.4	112.3	150.8	249.5	235.4	149.5
2011	168.3	86.6	69.7	28.3	18.30	26.5	108.1	102	86.6	79.1	90.4	55.4
2012	98.3	113	119.7	116.2	114.80	83.8	103	120	245.4	142.8	136.7	118.7
2013	200.3	161.8	160.3	104.9	95.80	67.1	80.7	84.3	91.4	135.1	152.4	
2014	197.4	130.4	161	117.6	102.20	64.4						
AVERAGE	153.9	98.7	110.6	76.0	75.8	68.4	103.2	111.7	145.4	149.8	144.8	113.3

## Growing Degree Days

Growing-Degree-Days (GDD) are a measure of the accumulated amount of heat (in degrees Celsius) above a base temperature (10 Degrees ) taken from one point on the landscape over time. The concept of GDDs assumes that plant growth is directly related to the average daily temperature. It disregards factors such as soil temperature, differences in the pattern of night and day temperatures and other variations caused by the stage of growth of the plant. The GDDs for each day are added together, or accumulated throughout the growing season.

